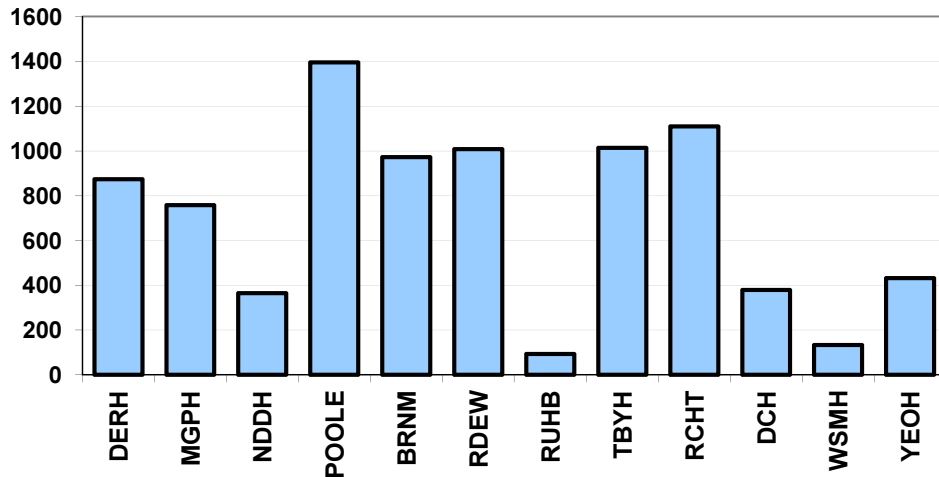


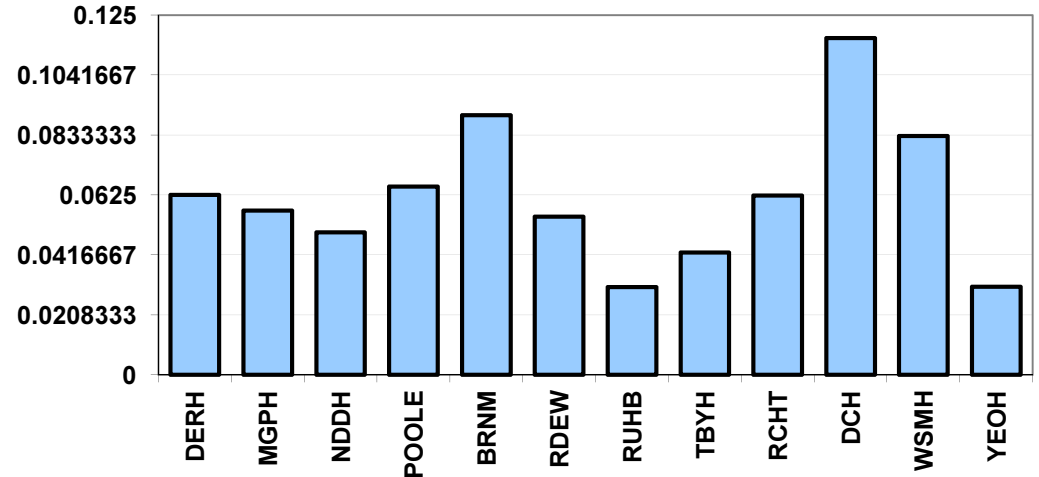
Handovers over 15 minutes

<<< [Click here to change between 30 and 15 minute breaches \(requires Macros to be enabled\)](#)

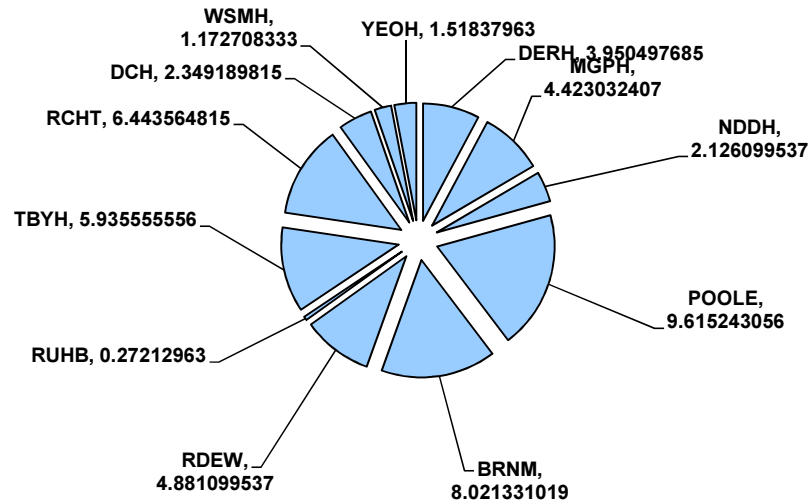
Count of Handovers Over 15 Minutes - 16 Dec 13 - 19 Jan 14



Worst Recorded Handover Time - 16 Dec 13 - 19 Jan 14



Total Hours Lost Over 15 Minutes - 16 Dec 13 - 19 Jan 14



Average Handover Time - 16 Dec 13 - 19 Jan 14

